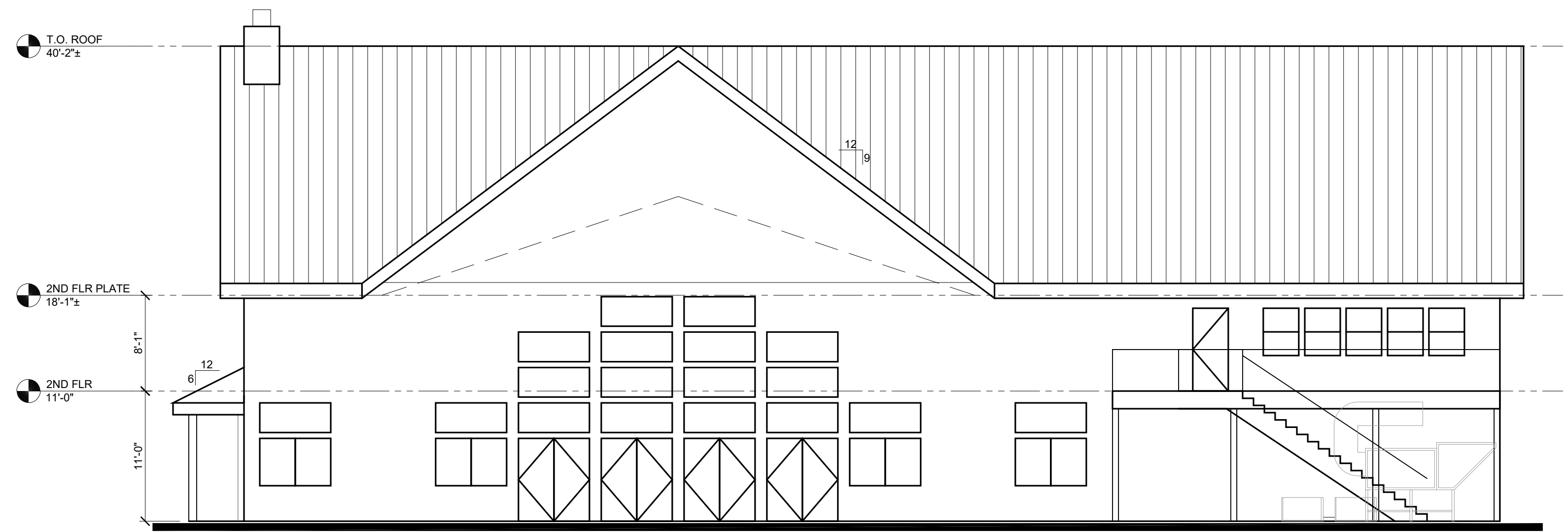
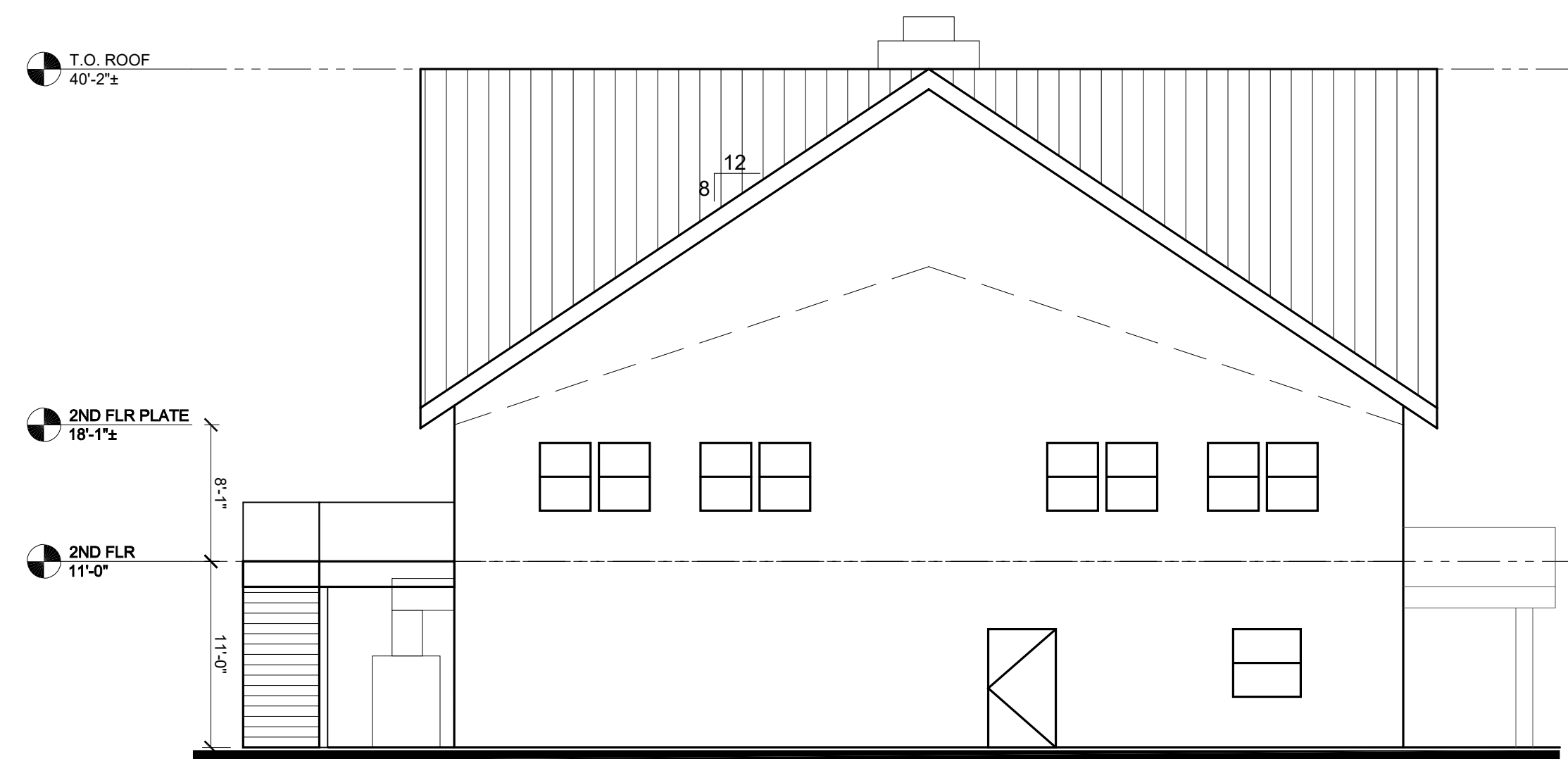




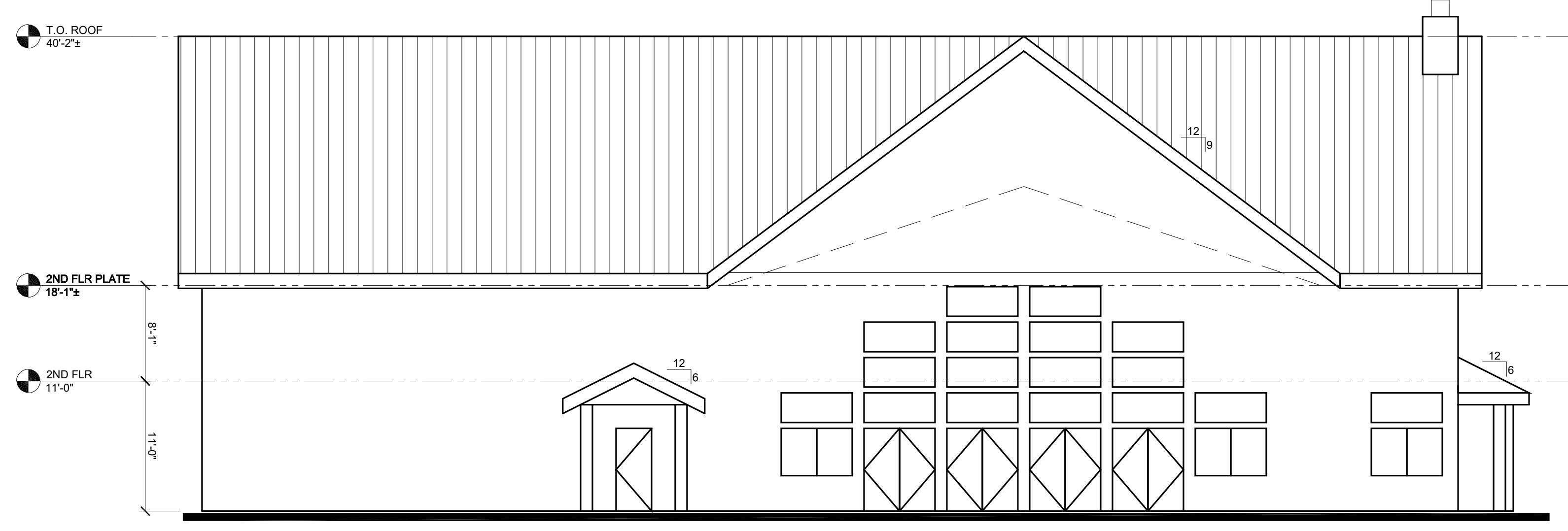
**A** NORTH ELEVATION  
SCALE: 1/8" = 1'-0"



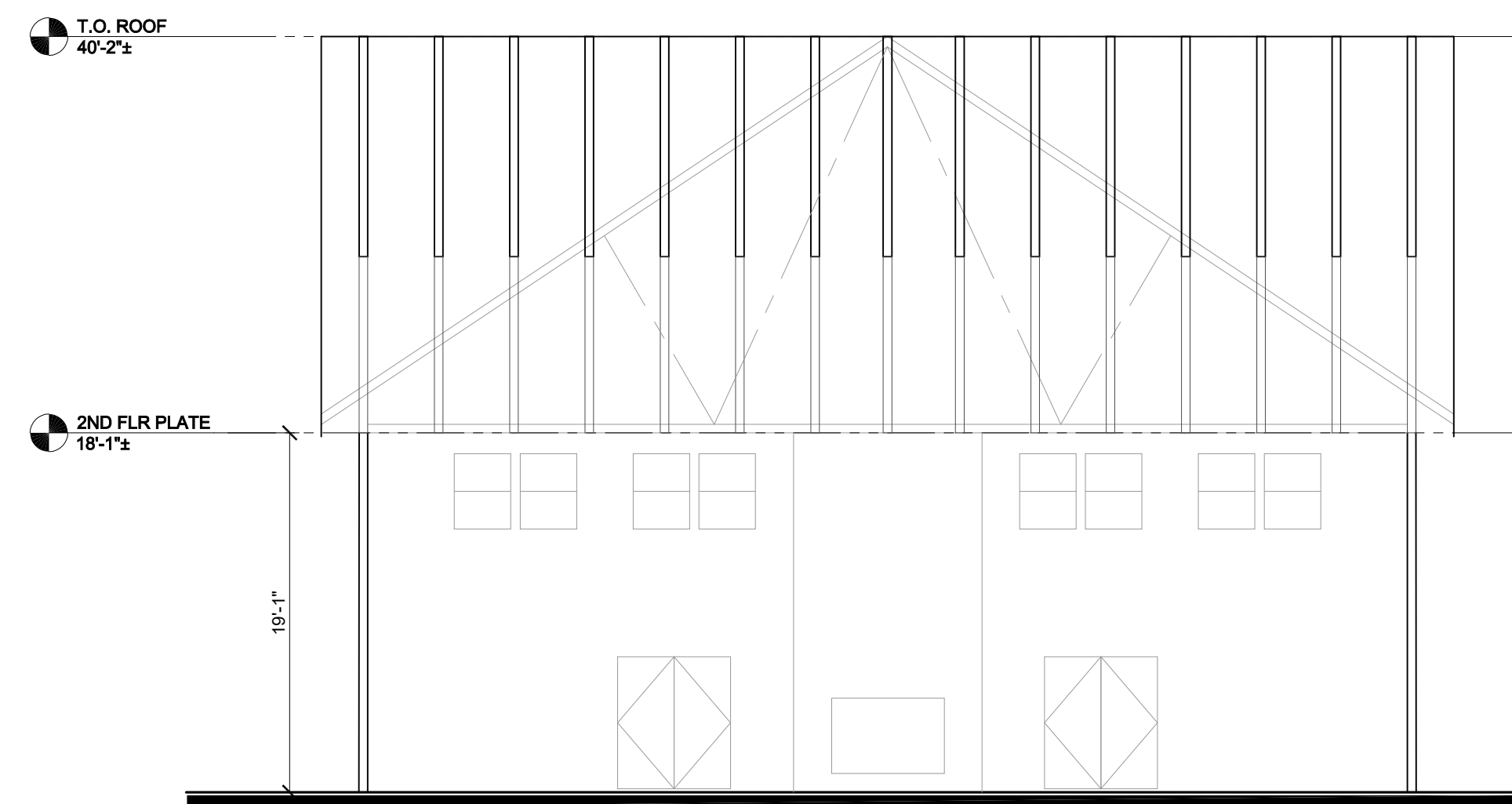
**B** WEST ELEVATION  
SCALE: 1/8" = 1'-0"



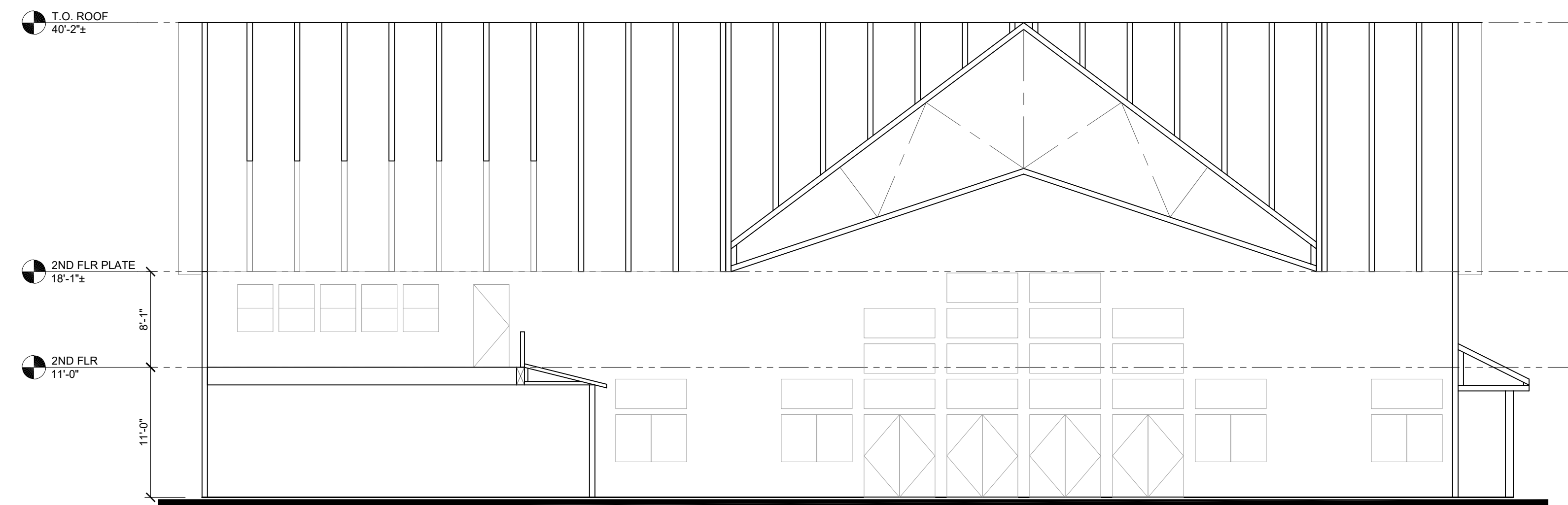
**C** SOUTH ELEVATION  
SCALE: 1/8" = 1'-0"



**D** EAST ELEVATION  
SCALE: 1/8" = 1'-0"



**E** WEST-EAST SECTION  
SCALE: 1/8" = 1'-0"



**F** SOUTH-NORTH SECTION  
SCALE: 1/8" = 1'-0"